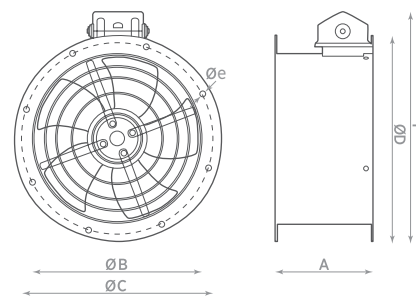


## ASPIRATORE ASSIALE – AXIAL FAN



MODELLO MODEL	A	ØB	ØC	ØD	Øe	F	FORI HOLES
AXIA AI 25	160	258	280	308	10	352	4 x 90°
AXIA AI 30	180	310	355	382	10	425	8 x 45°
AXIA AI 35	180	360	395	422	10	471	8 x 45°
AXIA AI 40	190	408	450	480	12	524	8 x 45°
AXIA AI 45	220	452	500	530	12	572	8 x 45°
AXIA AI 50	220	505	560	590	12	628	12 x 30°
AXIA AI 60	220	636	690	720	12	760	12 x 30°



**■** Aspiratori assiali intubati per convogliare all'esterno aria o esalazioni provenienti da condotti.

- Anello doppia flangia
- Aspiratori compatti con ingombri limitati;
- Bassa rumorosità in rapporto alle elevate prestazioni;
- Temperatura max aria aspirata: 60°C;
- Corpo e griglia in acciaio verniciato a forno con polveri epossidiche anti corrosione;
- Ventola in lamiera d'acciaio verniciato o in materiale plastico, equilibrata staticamente e dinamicamente.
- Prodotto di lunga durata grazie all'utilizzo di un motore ad induzione a rotore esterno montato su cuscinetti a sfera, isolamento in classe B o F;
- Reversibilità: tutti tranne il modello 25 4M;
- Flange di raccordo conformi alla NORMA ISO 13351;
- Velocità regolabile tramite i regolatori industriali (opzionali);
- Conforme alle direttive comunitarie vigenti ed alle Norme UNI EN ISO 13857; UNI EN ISO 12499; CEI EN 60204 – 1.
- **POSIZIONAMENTO:** a condotto

**■** Axial duct fans to convey air outside or fumes coming from ducts.

- Double ring flange;
- Compact fans with reduced overall dimensions;
- Low sound level compared with high performance;
- Max temperature of extracted air: 60°C;
- Body in steel protected by an epoxy-based anticorrosive paint;
- Impeller in steel protected by an epoxy-based anticorrosive paint or in plastic PP material;
- Motor impeller with external rotor mounted on ball bearing, insulation Class B or F;
- Reversibility: Three-phase: all models; Single-phase: all models except AXIA AI 25 4M;
- Flange in accordance with ISO 13351;
- Motor speed can be regulated through industrial controllers (see accessories);
- In accordance with the essential requirements of 2006/42/EC Directive concerning machines and European Standards UNI EN ISO 13857; UNI EN ISO 12499; CEI EN 60204-1.
- **POSITIONING:** Duct mounting.

### DATI TECNICI – TECHNICAL DATA

MODELLO MODEL	CODICE CODE	MOTORE MOTOR	Giri al minuto Rev./minute (RPM)	TENSIONE VOLTAGE (Volt)	FREQUENZA FREQUENCY (Hz)	PORT.MAX FLOW RATE (m <sup>3</sup> /h)	PRESS.MAX MAX PRESS. (mm H <sub>2</sub> O)	PRESS. MAX MAX PRESS. (Pa)	POTENZA POWER (W)	CORR. NOM. NOM. CURR. 230V 400V	IP MOTORE IP MOTOR	RUMOROSITÀ NOISE dB(A) <sub>2m</sub>	PESO WEIGHT (kg)
AXIA AI 25 2M	0073400	single p.	2500	230	50 – 60	1650	29,6	290	110	0,5 –	IP44	66	4,5
AXIA AI 25 4M	0073405	single p.	1400	230	50 – 60	1000	10,2	100	70	0,5 –	IP44	52	4
AXIA AI 30 2M	0073410	single p.	2650	230	50 – 60	3300	28,6	280	230	1,1 –	IP44	70	7
AXIA AI 30 4M	0073415	single p.	1350	230	50 – 60	1800	12,8	125	70	0,3 –	IP44	49	6
AXIA AI 35 4M	0073420	single p.	1350	230	50 – 60	3300	16,3	160	165	0,7 –	IP44	55	7
AXIA AI 40 4M	0073430	single p.	1400	230	50 – 60	4250	20,4	200	170	0,8 –	IP44	62	10
AXIA AI 45 4M	0073440	single p.	1300	230	50 – 60	7000	20,4	200	400	2,4 –	IP44	57	12
AXIA AI 25 2T	0073401	three p.	2500	400	50 – 60	1650	29,6	290	110	0,35 0,2	IP44	66	4
AXIA AI 25 4T	0073406	three p.	1400	400	50 – 60	1000	10,2	100	25	0,2 0,1	IP44	52	4,1
AXIA AI 30 2T	0073411	three p.	2600	400	50 – 60	3300	28,6	280	200	1 0,6	IP44	70	7
AXIA AI 30 4T	0073416	three p.	1350	400	50 – 60	1800	12,8	125	65	0,25 0,14	IP44	46	6
AXIA AI 35 4T	0073421	three p.	1400	400	50 – 60	3300	16,3	160	170	0,7 0,4	IP44	55	7
AXIA AI 40 4T	0073431	three p.	1400	400	50 – 60	4200	20,4	200	140	0,8 0,5	IP44	62	10
AXIA AI 45 4T	0073441	three p.	1300	400	50 – 60	7000	20,4	200	450	1,8 1	IP44	58	12
AXIA AI 50 4T	0073450	three p.	1400	400	50 – 60	9000	23,5	230	550	2,2 1,2	IP44	62	20
AXIA AI 60 6T	0073455	three p.	900	400	50 – 60	11300	15,3	150	450	1,9 1,1	IP44	58	25

### AMBITI APPLICATIVI

**■** Indicato per installazione prevalentemente in ambito industriale:

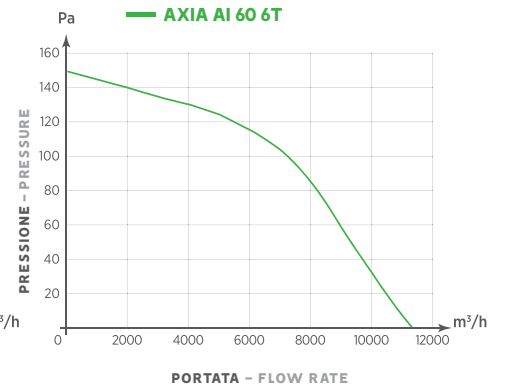
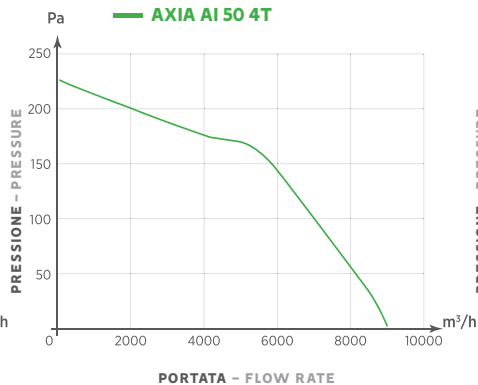
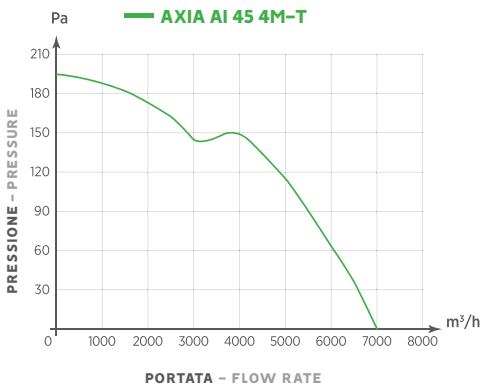
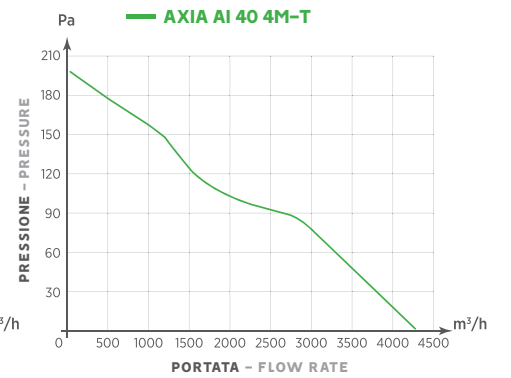
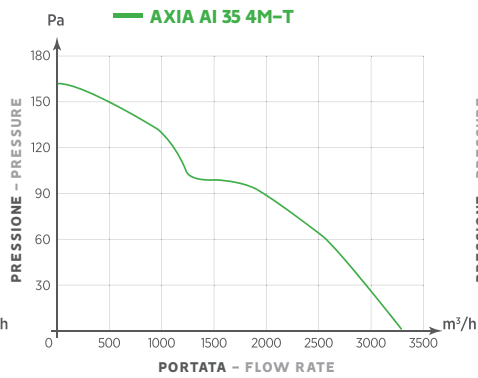
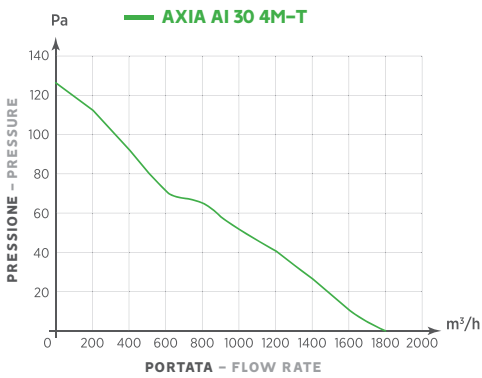
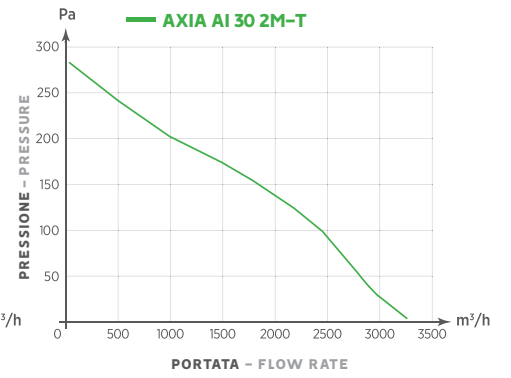
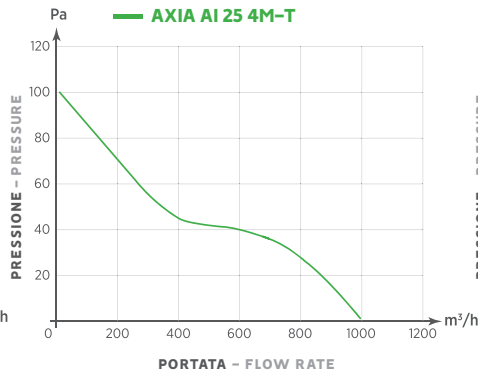
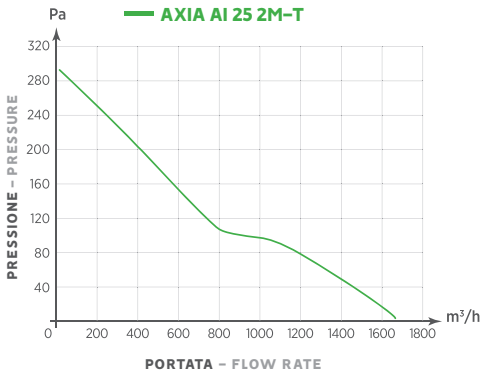
- Industrie
- Capannoni
- Magazzini
- Serre ed allevamenti
- Parcheggi
- Cucine e mense
- Impianti sportivi
- Supermercati e centri commerciali

### ENVIRONMENTS APPLICATION

**■** Suitable for installation in industrial environment such as:

- Industries
- Sheds
- Warehouses
- Greenhouses and breeding
- Parking
- Kitchens and Refectories
- Sports facilities
- Supermarkets and Shopping centers

**GRAFICI DI PORTATA - FLOW CHARTS**



**ACCESSORI (PAGINA 72, 74) - ACCESSORIES (PAGE 72, 74)**



Regolatori  
Controllers



Rete piana  
Safety protection grille



Flangia Piana  
Connection flange



Anello di prolunga  
Extension ring



Giunto antivibrazione  
Flexible connecton



Supporto  
Support