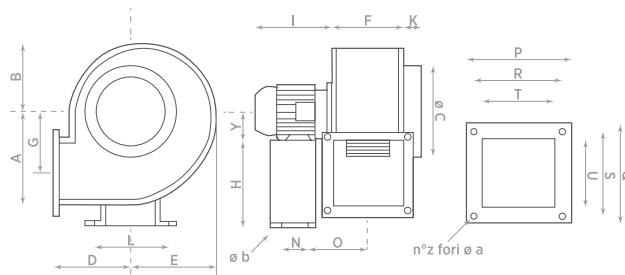


ANTIDEFAGRANTI EX-ATEX – EXPLOSION PROOF FANS EX-ATEX



MODELLO MODEL	A	B	ØC	D	E	F	G	H	Y	K	I	L	N	O	P	Q	R	S	T	U	*Z	Øa	Øb
EX-ATEX																							
CS 310	139	108	180	127	122	94	91	-	63	42	242	-	-	-	135	135	114	114	88	90	4	8,2	-
CS 320	172	128	200	146	150	112	117	-	63	45	242	-	-	-	152	152	126	126	105	105	4	8,2	-
CS 330	209	163	250	147	188	141	139	-	71	40	242	-	-	-	191	191	165	165	134	134	4	8,2	-
CS 340	250	194	250	178	222	164	162	-	80	45	259	-	-	-	225	235	195	205	161	170	4	8,2	-
CS 350	290	225	315	210	260	194	192	245	80	50	259	232	120	149	255	255	225	225	191	194	4	8,2	11
CS 360	290	225	315	210	260	194	192	245	90	50	300	232	120	155	255	255	225	225	191	194	4	8,2	11
CS 370	334	244	355	230	250	221	210	350	100	50	354	325	170	173	284	305	254	275	213	244	4	10,2	11
CS 380	429	315	400	300	370	249	280	350	112	62	358	325	170	194	310	360	280	330	241	295	8	9	11

*Z: n° Fori/Holes



Aspiratori centrifughi destinati all'utilizzo in atmosfera potenzialmente esplosiva (Direttiva ATEX 2014/34/UE nei paesi membri della Comunità Europea).

- Idonei per ambito industriale in presenza di gas, vapori e nebbie infiammabili.
- Omologato con certificato CESI n° 03 ATEX 250;
- Espulsione dell'aria in condotti medio-lunghi;
- Aspiratore gruppo II, categoria 2 per gas, sicurezza costruttiva Ex h, livello protezione apparecchio (EPL) Gb, max temp. superficiale T4 (135°C); a richiesta modelli T5 e T6;
- Utilizzabile in aree classificate come zona 1 e 2;
- Ventola e Corpo in lamiera d'acciaio. Corpo verniciato a forno con polveri epossidiche anticorrosione;
- Motore tipo Exd IIC T4 su cuscinetto a sfera classe F con grado di protezione IP55;
- Temp. max aria aspirata: 60°C;
- Il prodotto standard viene fornito con la coclea in posizione CCW 270;
- Su richiesta possono essere fornite posizioni della coclea e senso di rotazione diversi, come indicato nella tabella a pag. 77;
- A partire dal modello 350, i prodotti sono dotati di supporto rigido (sedia) per facilitarne l'installazione;
- Normative di riferimento: EN 80079-36; EN 80079-37; EN 14986.
- **POSIZIONAMENTO:** a Parete

Explosion Proof Certified Centrifugal fans to extract air and fumes through medium/long sized ducts in compliance with ATEX Directive 2014/34/UE.

- Suitable for applications in commercial and industrial environments where the risk of explosion is high and where the surrounding atmosphere contains gas, vapours or highly inflammable steam;
- The whole product and not just the electrical parts, has been certified by CESI institute with CESI n°03 ATEX 250 certificate;
- Fan group II, cat. 2 for gases, construction safety Ex h, device protection level (EPL) Gb, max surface temp. T3 (200°C);
- Classified for zones 1 and 2;
- This approval has required specific safety tests and proper examinations on products to verify how the adopted solutions have satisfied the essential Directive requirements;
- Steel plated frame protected by an epoxy-based anticorrosive paint and aluminium centrifugal impeller statically and dynamically balanced;
- Exd IIC T4, ball bearing class F insulation motor IP55 protected;
- Max temperature of extracted air: 60°C;
- Models CS 350, 360, 370 and 380: mounted on rigid base support to make installation easier;
- Standard product supplied with impeller housing position CCW 270, different positions available on request (see table on page 78);
- Reference Standards: EN 80079-36; EN 80079-37; EN 14986.
- **POSITIONING:** Wall mounting

DATI TECNICI – TECHNICAL DATA

MODELLO MODEL	CODICE CODE	MOTORE MOTOR	MARCATURA MARKING	N° POLI N° POLES	GIRI AL MINUTO REV. PER MIN.	TENSIONE VOLTAGE	FREQUENZA FREQUENCY	PORTATA FLOW RATE	PRESS. MAX MAX PRESS.	PRESS. MAX MAX PRESS.	POTENZA POWER	CORR. NOM. (A) NOM. CURR.	IP MOTORE	RUMOROSITÀ NOISE	PESO WEIGHT
EX-ATEX					(RPM)	(Volt)	(Hz)	(m³/h)	(mm H₂O)	(Pa)	(W)	230V 400V		dB(A) _{1m}	(kg)
CS 310 4M	0032500	single p.	II2GExhT4	4	1400	230	50	500	16	157	200	1	IP55	64	10
CS 320 4M	0032700	single p.	II2GExhT4	4	1400	230	50	720	21	206	250	1,5	IP55	67	14
CS 310 4T	0032600	three p.	II2GExhT4	4	1400	230/400	50	500	16	157	200	1 0,59	IP55	64	13
CS 320 4T	0032800	three p.	II2GExhT4	4	1400	230/400	50	720	21	206	250	1,75 1	IP55	67	14
CS 330 4T	0032900	three p.	II2GExhT4	4	1400	230/400	50	1500	38	373	400	1,9 1,1	IP55	70	21
CS 340 4T	0032100	three p.	II2GExhT4	4	1400	230/400	50	1900	47	461	1000	3,5 2	IP55	73	31
CS 350 4T	0033000	three p.	II2GExhT4	4	1400	230/400	50	2900	50	490	1400	4 2,31	IP55	76	37
CS 360 4T	0032200	three p.	II2GExhT4	4	1400	230/400	50	4100	60	589	1900	5,7 3,3	IP55	80	44
CS 370 4T	0033100	three p.	II2GExhT4	4	1400	230/400	50	5600	73	716	2500	8,7 5	IP55	84	67
CS 380 4T	0033800	three p.	II2GExhT4	4	1400	230/400	50	9100	105	1030	4500	15,6 9	IP55	88	91

AMBITI APPLICATIVI

Indicato per installazione in ambito commerciale, terziario e industriale. Destinati all'utilizzo in atmosfera potenzialmente esplosiva:

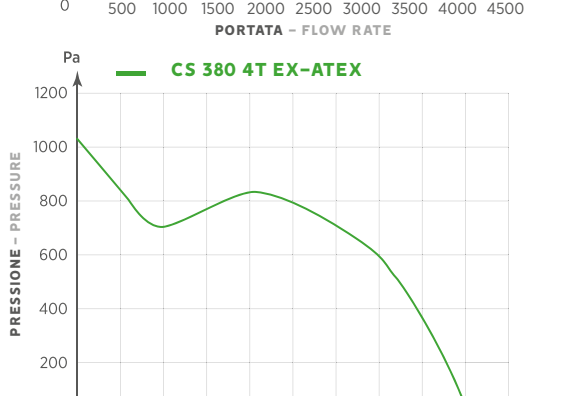
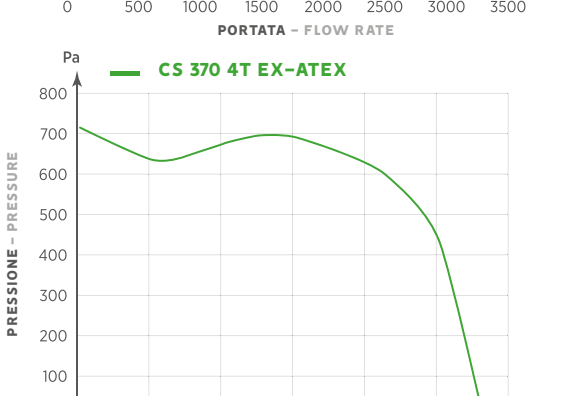
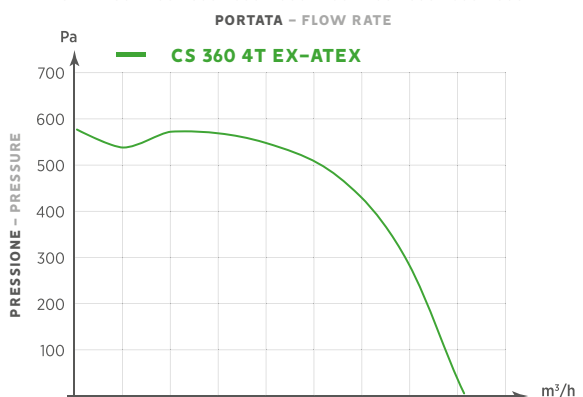
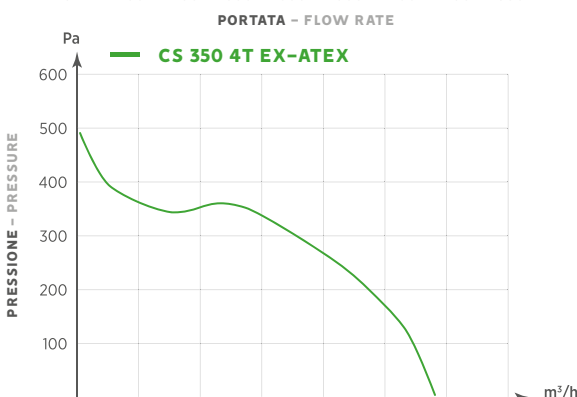
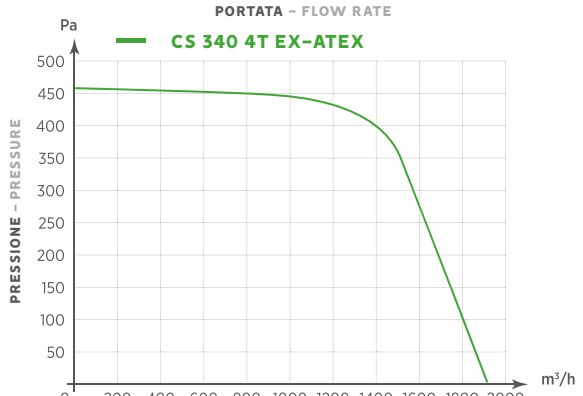
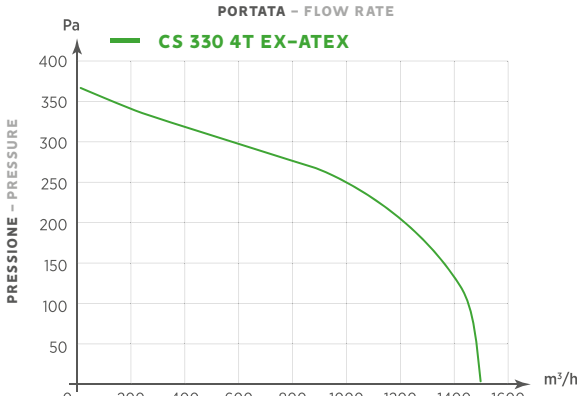
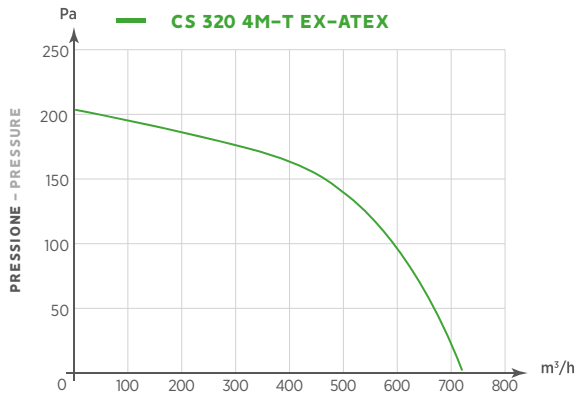
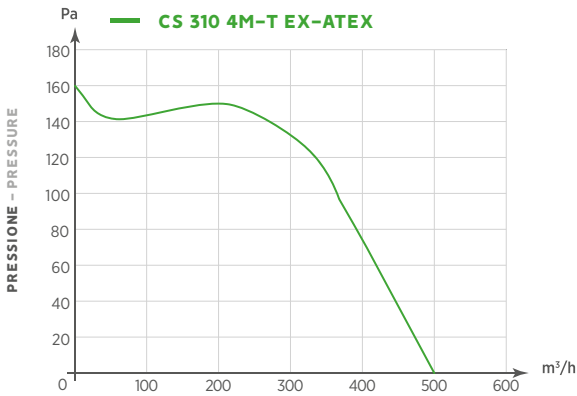
- Negozi;
- Officine;
- Impianti sportivi;
- Supermercati e centri commerciali;
- Depositi e magazzini;
- Industrie;
- Macchinari.

ENVIRONMENTS APPLICATION

Suitable for Industrial, civil and commercial application where the risk of explosion is high.

- Shops;
- Workshops;
- Sports facilities;
- Supermarkets and shopping centers;
- Warehouse;
- Factories;
- Machinery

GRAFICI DI PORTATA - FLOW CHARTS



**ACCESSORI INSTALLABILI FUORI ZONA EX ATEX (PAGINA 72)
ACCESSORIES SUITABLE FOR INSTALLATION OUTSIDE OF THE EX ATEX AREA (PAGE 72)**



Regolatori
Controllers