

EM 125 E2 01

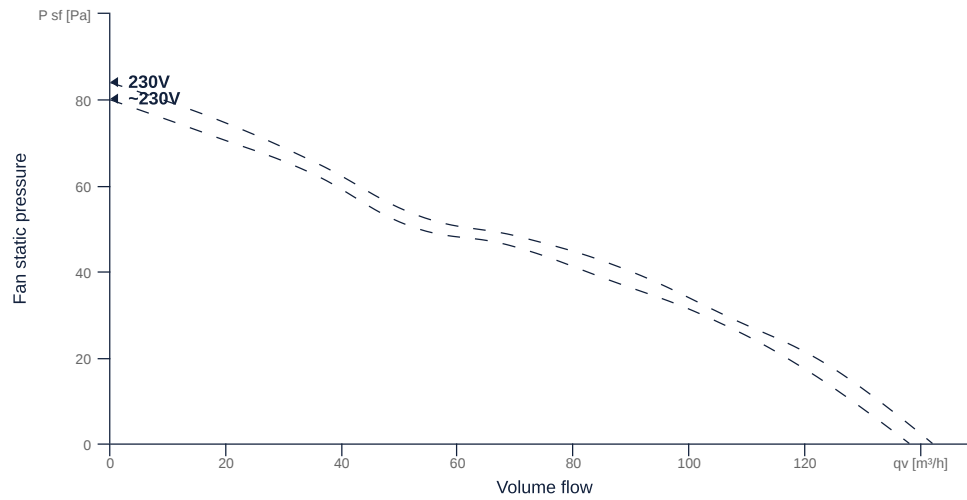
137550

- Innovative, high-efficiency diagonal fan
- Optimally tuned, CFD-optimized aerodynamics
- Housing made of impact-resistant, reinforced polypropylene
- Robust single phase AC motor
- Conveyed medium temperature up to 60 °C in continuous operation
- The benchmark for efficiency since 2012



MAP

| Name | Value | Unit |
|-------------|-------|------|
| Volume flow | 0 | m³/h |
| Pressure | 0 | Pa |



to the product detail page

GENERAL DATA

| Name | Value | Unit | Formula symbol |
|---------------------------------------|----------|------|-------------------------|
| Labeling | CE, UKCA | | |
| Duct size | - | | WxH _{duct} |
| Pipe connection size (DN) | DN125 | | DN |
| Rated voltage (entire device) | 230 | V | U _{rated} |
| Phases (entire device) | 1~ | | phase |
| Electrical protection (entire device) | 6 A | | fuse |
| Housing material | Plastic | | mat _{casing} |
| Impeller material | Plastic | | mat _{impeller} |
| IP-protection class (entire device) | IPX2 | | IP _{compl} |
| Weight | 0.83 | kg | m |
| Fan type | Diagonal | | Fan _{type} |
| Category / Installation situation | A | | cat |

MAXIMAL DATA

| Name | Value | Unit | Formula symbol |
|---------------------------------|-------|-------------------|-----------------------|
| Max. power consumption (device) | 14 | W | P _{ed, max} |
| Max. operating current (device) | 0.22 | A | I _{ed, max} |
| Max. speed | 2590 | 1/min | n _{max} |
| Max. stat. efficiency | 7.2 | % | η _{es} |
| Max. fan efficiency | 7.8 | % | η _e |
| Max. flowrate | 142 | m ³ /h | Q _{v, max} |
| Max. stat pressure | 84 | Pa | p _{sf, max} |
| Max. medium temperature | 60 | °C | T _{m, max} |
| Max. environment temperature | 60 | °C | T _{amb, max} |
| Min. environment temperature | -25 | °C | T _{amb, min} |
| Min. voltage | 207 | V | U _{min} |



to the product detail page

MOTOR DATA

| Name | Value | | Unit | Formula symbol |
|--------------------------|-------|------------|-------|------------------------|
| | 50 Hz | 60 Hz | | |
| Rated frequency (device) | | 50 | | f |
| Motor type | | Split pole | | phase |
| Installation type | | IRM (In) | | install |
| Rotation direction | | right | | rotation |
| Isolation class | | ISO F | | ISOclass |
| Protection class | | IP00 | | IPmotor |
| Is pole-changeable | | No | | polexch |
| Type of power supply | | AC 1~ | | pwrsupmotor |
| Rated voltage | 230 | | V | U _{rated, f1} |
| Rated current | 0.09 | | A | I _{rated, f1} |
| Shaft power | 13 | | W | P _{out, f1} |
| Speed | 2800 | | 1/min | n _{f1} |
| UL-Certification motor | | None | | ULcert |

ERP DATA (LOT11)

| Name | Value | Unit | Formula symbol |
|---|----------|-------------------|---------------------------|
| Speed at the energy efficiency optimum | 2498 | 1/min | n _{opt} |
| Efficiency level | 7.4 | % | N |
| Efficiency category | statisch | | cat _{efficiency} |
| Input power of the motor at the energy efficiency optimum | 0.01 | kW | P _{e, opt} |
| Overall efficiency | 37.7 | % | η _{ges} |
| Measurement category | A | | meas cat |
| Fan pressure at energy efficiency optimum | 43 | Pa | p _{f, opt} |
| Flowrate at energy efficiency optimum | 87 | m ³ /h | Q _{v, opt} |

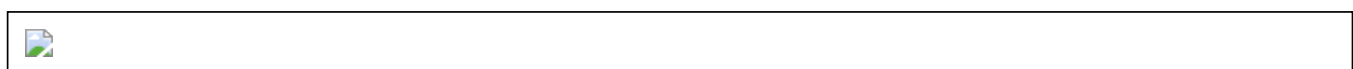
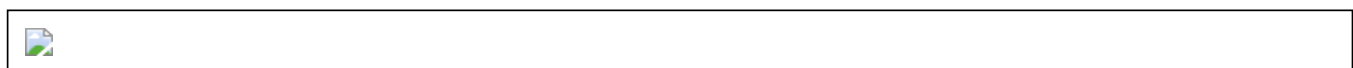
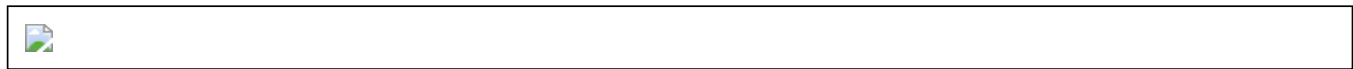
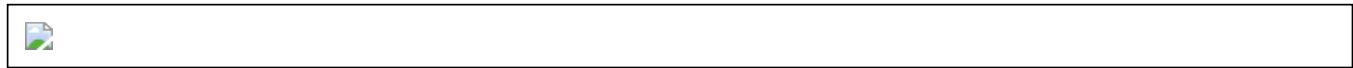


to the product detail page

EM 125 E2 01

137550

CIRCUIT DIAGRAMS / DIMENSIONAL DRAWINGS



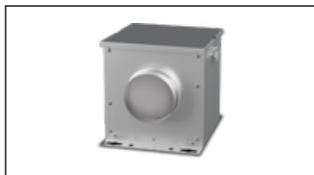
to the product detail page

EM 125 E2 01

137550

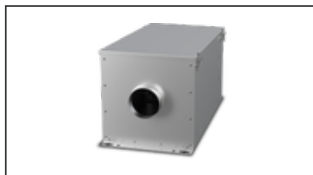
MECHANICAL ACCESSORIES

FV 125 | 112679



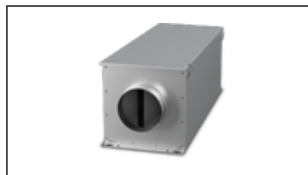
- Air filter box with mat filter ISO Coarse 45 % (G3)
- Toggle-type fastener

FT 125 | 112843



- Air filter box for pocket filter
- Toggle-type fastener
- Galvanized steel sheet housing
- Without filter

FTW 125 | 112850



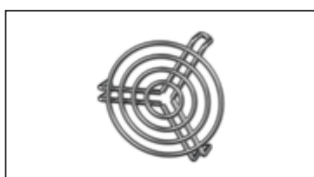
- Air filter box with pocket filter M5
- Integrated warm water heating coil
- Galvanized steel sheet housing
- Toggle-type fastener

RSK 125 | 102179



- Back draught shutter for tube fitting
- Galvanized steel sheet housing
- Aluminum flaps

SG 125 01 | 102895



- Protection grille for tube connection
- Galvanized wire

SDF 125 | 102700



- Flexible tube silencer
- Galvanized steel sheet
- Sound insulation packing 50 mm

SDS 125 | 102712



- Rigid tube silencer
- Galvanized steel sheet
- Sound insulation packing 50 mm (mineral wool)

VM 125 | 102647



- Fast clamps for sound decoupling and sealing
- Galvanized steel sheet, 5 mm
- Neopren gasket
- 1 Pack = 2 pieces

RSK 125D | 113483



- Back draught shutter for tube fitting
- Galvanized steel sheet housing
- Aluminum flaps
- Integrated gasket

ELECTRICAL ACCESSORIES

GS 03 | 107633



- Device switch
- $U_{max} = 400 \text{ V}$, $I_{max} = 25 \text{ A}$
- Switching capacity $400 \text{ V } 3\text{-} = 5,5 \text{ kW}$
- Protection class IP 55



to the product detail page