

EM 125 EC 01

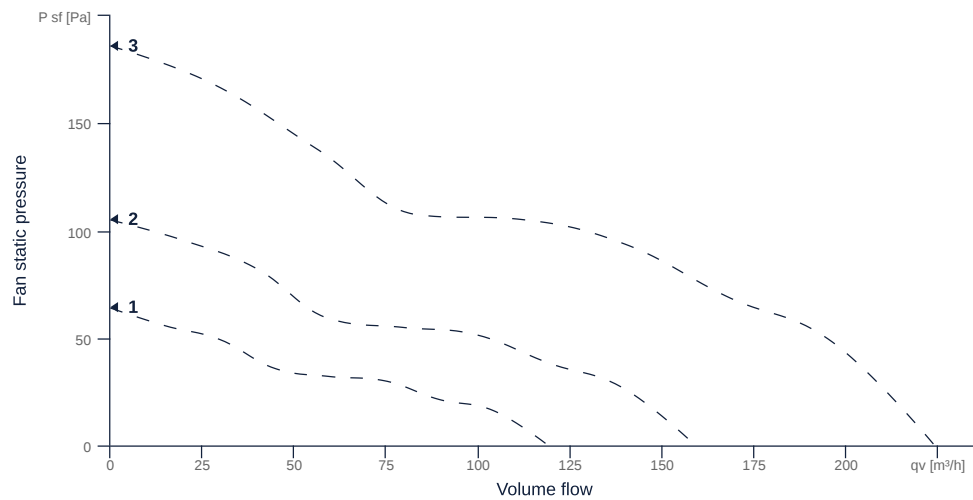
145668

- Innovative, high-efficiency diagonal fan
- Optimally tuned, CFD-optimized aerodynamics
- Housing made of impact-resistant, reinforced polypropylene
- High efficiency IE5 EC motor, 3-steps controllable
- Conveyed medium temperature up to 40 °C in continuous operation
- The benchmark for efficiency since 2012



MAP

Name	Value	Unit
Volume flow	0	m³/h
Pressure	0	Pa



to the product detail page

EM 125 EC 01

145668

ruck

GENERAL DATA

Name	Value	Unit	Formula symbol
Labeling	CE, UKCA		
Duct size	-		WxH _{duct}
Pipe connection size (DN)	DN125		DN
Rated voltage (entire device)	230	V	U _{rated}
Phases (entire device)	1~		phase
Electrical protection (entire device)	6 A		fuse
Housing material	Plastic		mat _{casing}
Impeller material	Plastic		mat _{impeller}
IP-protection class (entire device)	IPX2		IP _{compl}
Weight	0.7	kg	m
Fan type	Diagonal		Fan _{type}
Category / Installation situation	A		cat

MAXIMAL DATA

Name	Value		Unit	Formula symbol
	50 Hz	60 Hz		
Max. power consumption (device)	13	13	W	P _{ed, max}
Max. operating current (device)	0.23	0.23	A	I _{ed, max}
Max. speed	3760	3760	1/min	n _{max}
Max. stat. efficiency	28.2	28.2	%	η _{es}
Max. fan efficiency	28.8	28.8	%	η _e
Max. flowrate	220	220	m ³ /h	q _{v, max}
Max. stat pressure	185	185	Pa	p _{st, max}
Max. medium temperature	40	40	°C	T _{m, max}
Max. environment temperature	40	40	°C	T _{amb, max}



to the product detail page

MOTOR DATA

Name	Value		Unit	Formula symbol
	50 Hz	60 Hz		
Rated frequency (device)		50		f
Motor type		EC		phase
Installation type		IRM (In)		install
Rotation direction		right		rotation
Isolation class		ISO F		ISOclass
Motor-protection		TAI		protect _{motor}
Protection class		IP00		IP _{motor}
Is pole-changeable		No		polexch
Type of power supply		AC 1~		pwr _{sup} _{motor}
Number of poles (1)		2.000000		num_poles _{w1}
Rated voltage	230		V	U _{rated, f1}
Shaft power	10		W	P _{out, f1}
Speed	3800		1/min	n _{f1}
Efficiency	38		%	η _{m, f1}
UL-Certification motor		None		UL _{cert}

ERP DATA (LOT11)

Name	Value	Unit	Formula symbol
Speed at the energy efficiency optimum	3737	1/min	n _{opt}
Efficiency level	34.7	%	N
Efficiency category	statisch		cat _{efficiency}
Input power of the motor at the energy efficiency optimum	0.01	kW	P _{e, opt}
Overall efficiency	65.3	%	η _{ges}
Measurement category	A		meas cat
Fan pressure at energy efficiency optimum	98	Pa	p _{f, opt}
Flowrate at energy efficiency optimum	132	m ³ /h	q _{v, opt}

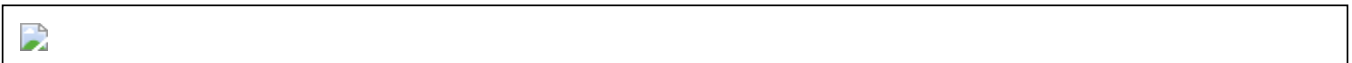
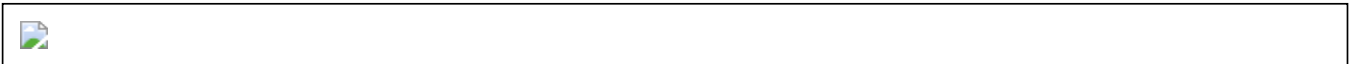
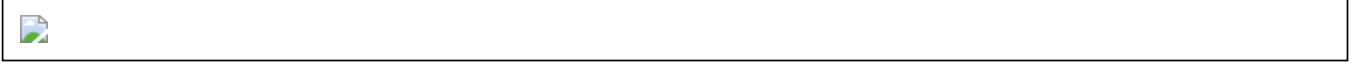


to the product detail page

EM 125 EC 01

145668

CIRCUIT DIAGRAMS / DIMENSIONAL DRAWINGS



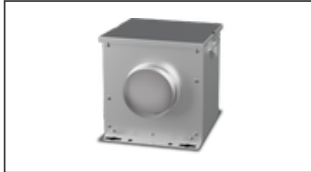
[to the product detail page](#)

EM 125 EC 01

145668

MECHANICAL ACCESSORIES

FV 125 | 112679



- Air filter box with mat filter ISO Coarse 45 % (G3)
- Toggle-type fastener

FT 125 | 112843



- Air filter box for pocket filter
- Toggle-type fastener
- Galvanized steel sheet housing
- Without filter

FTW 125 | 112850



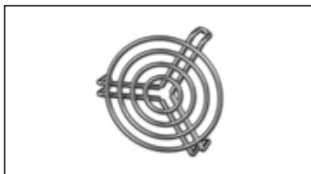
- Air filter box with pocket filter M5
- Integrated warm water heating coil
- Galvanized steel sheet housing
- Toggle-type fastener

RSK 125 | 102179



- Back draught shutter for tube fitting
- Galvanized steel sheet housing
- Aluminum flaps

SG 125 01 | 102895



- Protection grille for tube connection
- Galvanized wire

SDF 125 | 102700



- Flexible tube silencer
- Galvanized steel sheet
- Sound insulation packing 50 mm

SDS 125 | 102712



- Rigid tube silencer
- Galvanized steel sheet
- Sound insulation packing 50 mm (mineral wool)

VM 125 | 102647



- Fast clamps for sound decoupling and sealing
- Galvanized steel sheet, 5 mm
- Neopren gasket
- 1 Pack = 2 pieces

RSK 125D | 113483



- Back draught shutter for tube fitting
- Galvanized steel sheet housing
- Aluminum flaps
- Integrated gasket

ELECTRICAL ACCESSORIES

GS 03 | 107633



- Device switch
- $U_{max} = 400 \text{ V}$, $I_{max} = 25 \text{ A}$
- Switching capacity $400 \text{ V } 3\text{-} = 5,5 \text{ kW}$
- Protection class IP 55

MTS 10 | 128145



- 3-step switch
- Max. ambient temperature $50 \text{ }^\circ\text{C}$
- Surface and flush mounting
- IP 44



to the product detail page