

EM 160 EC 01

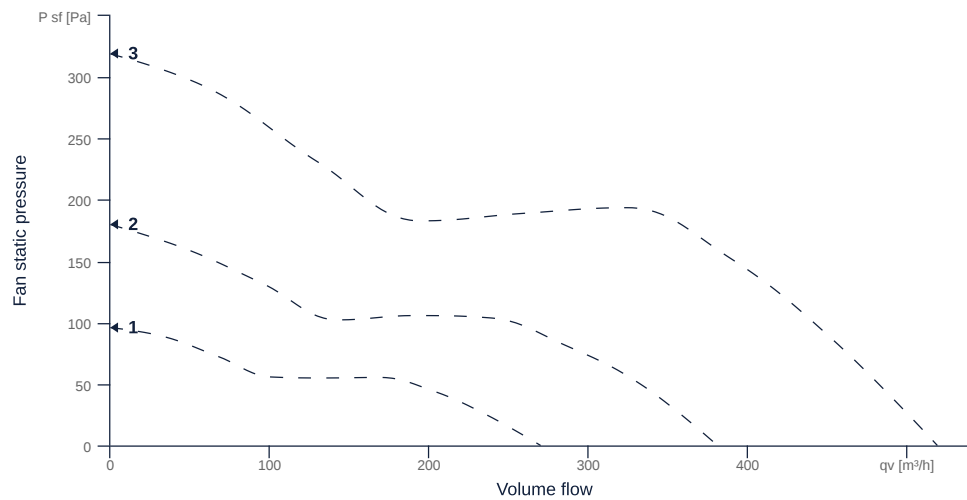
145674

- Innovative, high-efficiency diagonal fan
- Optimally tuned, CFD-optimized aerodynamics
- Housing made of impact-resistant, reinforced polypropylene
- High efficiency IE5 EC motor, 3-steps controllable
- Conveyed medium temperature up to 40 °C in continuous operation
- The benchmark for efficiency since 2012



MAP

Name	Value	Unit
Volume flow	0	m³/h
Pressure	0	Pa



to the product detail page

EM 160 EC 01

145674

ruck

GENERAL DATA

Name	Value	Unit	Formula symbol
Labeling	CE, UKCA		
Duct size	-		$W \times H_{duct}$
Pipe connection size (DN)	DN160		DN
Rated voltage (entire device)	230	V	U_{rated}
Phases (entire device)	1~		phase
Electrical protection (entire device)	6 A		fuse
Housing material	Plastic		mat_{casing}
Impeller material	Plastic		$mat_{impeller}$
IP-protection class (entire device)	IPX2		IP_{compl}
Weight	0.74	kg	m
Fan type	Diagonal		Fan_{type}
Category / Installation situation	A		cat

MAXIMAL DATA

Name	Value	Unit	Formula symbol
Max. power consumption (device)	45	W	$P_{ed, max}$
Max. operating current (device)	0.41	A	$I_{ed, max}$
Max. speed	3820	1/min	n_{max}
Max. stat. efficiency	38	%	η_{es}
Max. fan efficiency	40.3	%	η_e
Max. flowrate	515	m^3/h	$Q_{v, max}$
Max. stat pressure	315	Pa	$p_{sf, max}$
Max. medium temperature	40	°C	$T_{m, max}$
Max. environment temperature	40	°C	$T_{amb, max}$



MOTOR DATA

Name	Value		Unit	Formula symbol
	50 Hz	60 Hz		
Rated frequency (device)		50		f
Motor type		EC		phase
Control type		stepless-controlled		ctrltype
Installation type		IRM (In)		install
Rotation direction		right		rotation
Isolation class		ISO F		ISOclass
Motor-protection		TAI		protectmotor
Protection class		IP00		IPmotor
Is pole-changeable		No		polexch
Type of power supply		AC 1~		pwrsupmotor
Number of poles (1)		2.000000		num polesw1
Rated voltage	230		V	U _{rated, f1}
Shaft power	40		W	P _{out, f1}
Speed	3650		1/min	n _{f1}
Efficiency	58		%	η _{m, f1}
UL-Certification motor		None		ULcert

ERP DATA (LOT11)

Name	Value	Unit	Formula symbol
Speed at the energy efficiency optimum	3819	1/min	n _{opt}
Efficiency level	44	%	N
Efficiency category	statisch		catefficiency
Input power of the motor at the energy efficiency optimum	0.04	kW	P _{e, opt}
Overall efficiency	69	%	η _{ges}
Measurement category	A		meas cat
Fan pressure at energy efficiency optimum	190	Pa	p _{f, opt}
Flowrate at energy efficiency optimum	315	m³/h	Q _{v, opt}

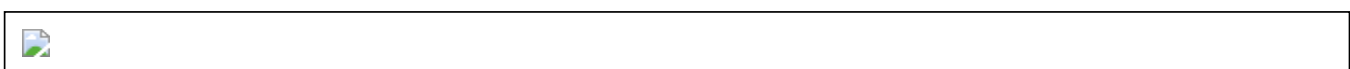
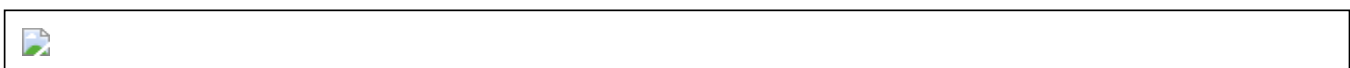
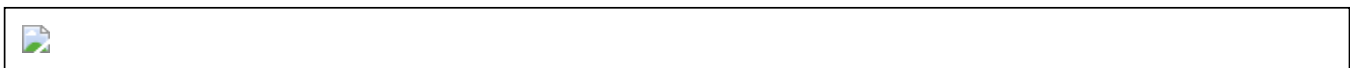
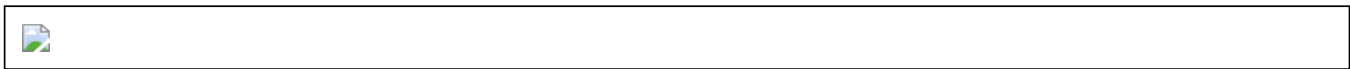
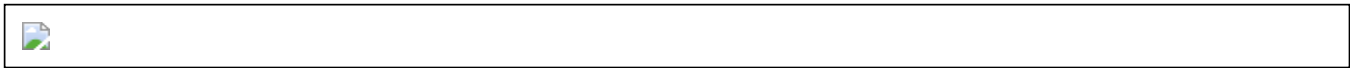


to the product detail page

EM 160 EC 01

145674

CIRCUIT DIAGRAMS / DIMENSIONAL DRAWINGS



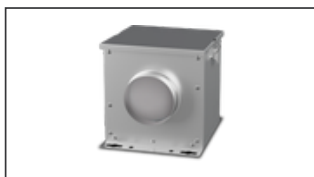
to the product detail page

EM 160 EC 01

145674

MECHANICAL ACCESSORIES

FV 160 | 112831



- Air filter box with mat filter ISO Coarse 45 % (G3)
- Toggle-type fastener

FT 160 | 112841



- Air filter box for pocket filter
- Toggle-type fastener
- Galvanized steel sheet housing
- Without filter

FTW 160 | 112852



- Air filter box with pocket filter M5
- Integrated warm water heating coil
- Galvanized steel sheet housing
- Toggle-type fastener

RSK 160 | 102661



- Back draught shutter for tube fitting
- Galvanized steel sheet housing
- Aluminum flaps

RSK 160D | 113485



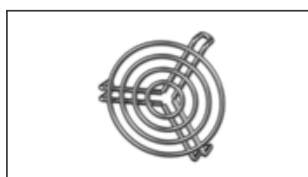
- Back draught shutter for tube fitting
- Galvanized steel sheet housing
- Aluminum flaps
- Integrated gasket

VM 160 | 102649



- Fast clamps for sound decoupling and sealing
- Galvanized steel sheet, 5 mm
- Neopren gasket
- 1 Pack = 2 pieces

SG 160 01 | 102897



- Protection grille for tube connection
- Galvanized wire

SDF 160 | 102703



- Flexible tube silencer
- Galvanized steel sheet
- Sound insulation packing 50 mm

SDS 160 | 102717



- Rigid tube silencer
- Galvanized steel sheet
- Sound insulation packing 50 mm (mineral wool)

ELECTRICAL ACCESSORIES

GS 03 | 107633



- Device switch
- $U_{max} = 400 \text{ V}$, $I_{max} = 25 \text{ A}$
- Switching capacity 400 V 3~ = 5,5 kW
- Protection class IP 55

MTS 10 | 128145



- 3-step switch
- Max. ambient temperature 50 °C
- Surface and flush mounting
- IP 44



to the product detail page