



## AIR PURIFIER

- USER'S MANUAL



**MODEL:**  
QLT-550



## | LANGUAGES

ENGLISH .....	3
---------------	---

---

# | Safety Warning

## Safety Precautions

### Notes

- This section describes the contents and importance of the safety matters to prevent personal injuries or property damages to the users or others. Please read the text on the basis of full understanding of the following contents, and be sure to abide by the safety matters as described.
- Do not use this appliance in wet or high temperature environment (like bathroom, toilet and kitchen).
- Before replacing the filter, please stop this appliance and cut off power.
- Do not place other items on top of the appliance, and forbid sitting or standing on this appliance.
- Please use the original filter provided by the factory. In case of other filters, the best results cannot be achieved.
- Do not use damaged or aged power cords; Forbid replacing the power cord without authorization. If the power cord is damaged, it must be replaced by the manufacturer, its service department or professional from similar department to avoid danger.
- This appliance is only subject to 220-240V power supply, and please unplug the power cord when it is not used for a long time.
- Do not insert the fingers or objects into the air inlets or air outlets to prevent the product from physical damages or malfunction.
- Please unplug the power cord immediately and contact the service center in time when the appliance suffers abnormal sound or burnt smell or smoke.
- This appliance can be used by children aged from 8 years and above and persons with reduced physical, sensory or mental capabilities or lack of experience and knowledge if they have been given supervision or instruction concerning use of the appliance in a safe way and understand the hazards involved. Children shall not play with the appliance. Cleaning and user maintenance shall not be made by children without supervision. Prior to cleaning or other maintenance, the appliance must be disconnected from the supply mains.

### Matters that may Cause Minor Injury or Property Damages

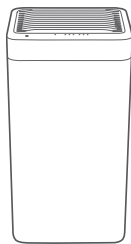
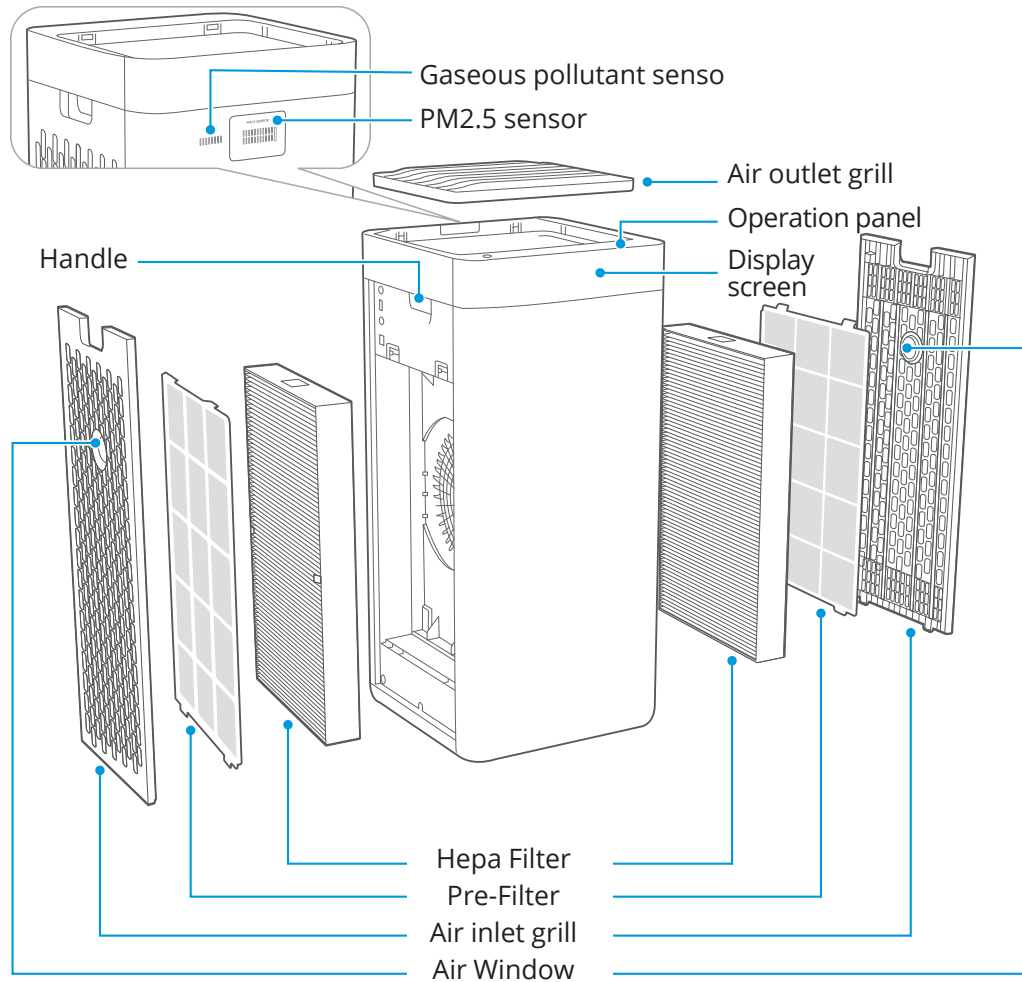
- Do not spray flammable substances near the appliance; Do not spray water directly on the appliance or use chemical cleaners like alcohol or hydrochloric acid, etc.; Do not place water containers, medicines, or flammable materials on the appliance.
- Do not block the air inlets/outlets of the appliance with any item;
- This appliance cannot replace natural ventilation and other appliances like the vacuum cleaner, kitchen ventilator, etc.
- When the appliance is working, it must be placed on a dry, flat and stable floor, with at least 30cm space reserved around it.
- Do not put it in a place with direct sunlight.
- To prevent electromagnetic disturbance, the appliance must keep a certain distance from the TV, radio, microwave oven and others.
- The mist produced by the ultrasonic humidifier may affect the PM2.5 detection of this appliance, and both should maintain a certain distance.
- Do not disassemble or modify this appliance without authorization to avoid accidents.
- Do not pull the power cord to move the appliance.
- Please take care of the children and make sure that the children do not touch the appliance to avoid accidents.

# | Product Profile

## ⚠ Notes

The pictures contained in the Manual are for reference only, and please be subject to the physical product in the packing box

## Name of components



Main machine



Protective bag

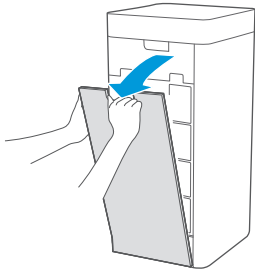


Manual

# Assembly Instructions

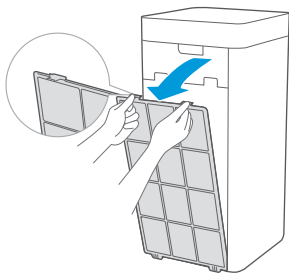
## Assembly procedures

### 1 Take down the air inlet grill



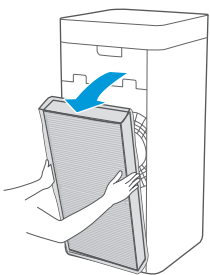
### 2 Take out the Pre-Filter

Press the U-shaped buckle to pull outward, and take out the Pre-Filter

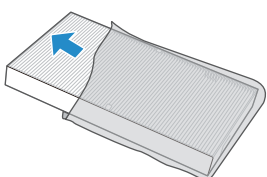


### 3 Take out the HEPA Filter

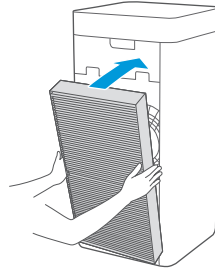
Hold both sides of the HEPA Filter with both hands, and take out the HEPA Filter



### 4 Remove the protective film of the HEPA Filter

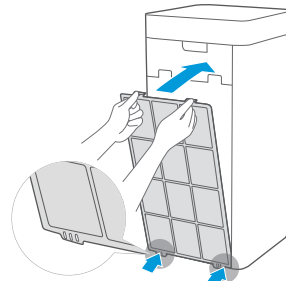


### 5 Assemble the HEPA Filter



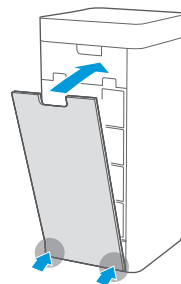
### 6 Assemble the Pre-Filter

Align the slot position at the bottom, and buckle up the upper U-shaped buckle



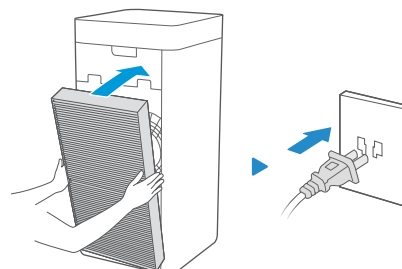
### 7 Assemble the air inlet grill

Align the slot position at the bottom, press both sides of the upper part of the air inlet grill, and buckle up the air inlet grill



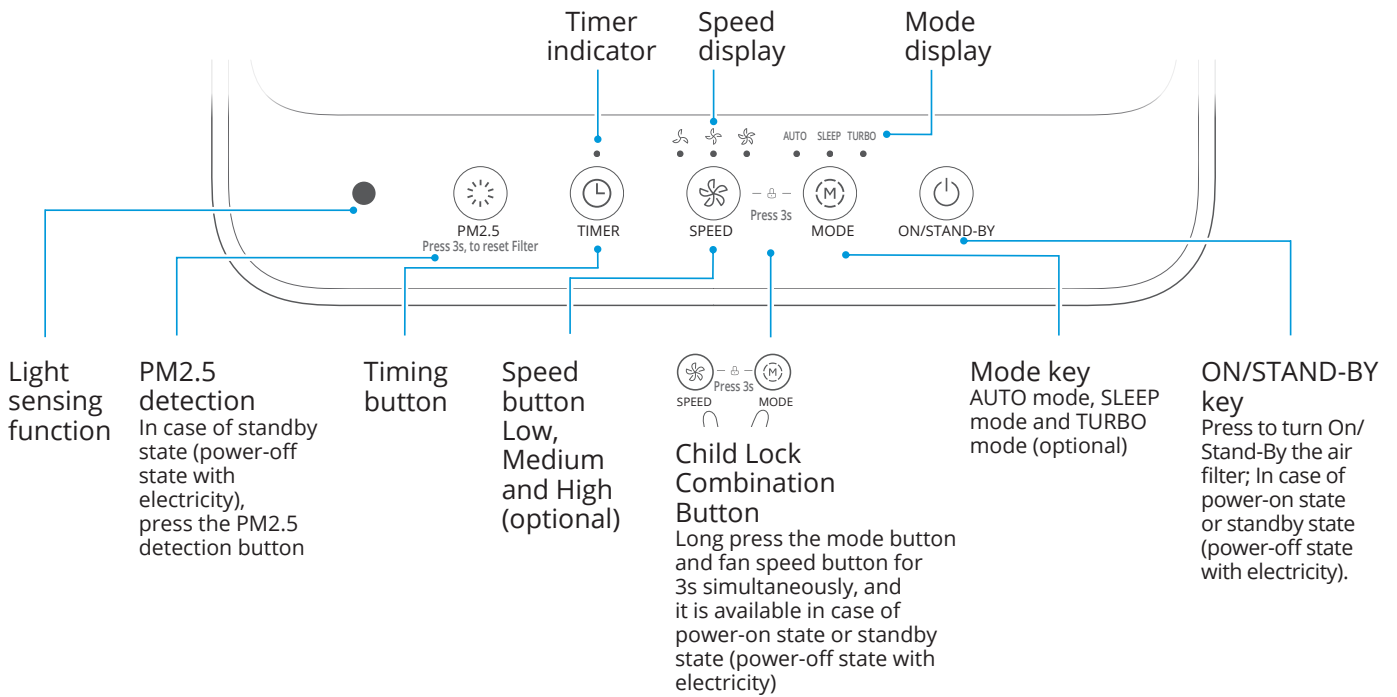
### 8 Assemble the filter on the other side

Repeat Steps 1-7 to assemble the filter on the other side, and then power on for operation

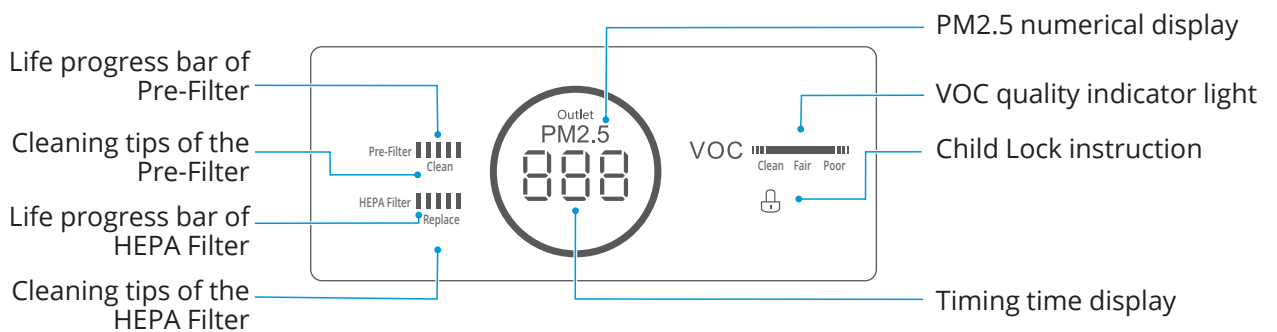


# | Operating Manual

## Control panel



## Display panel



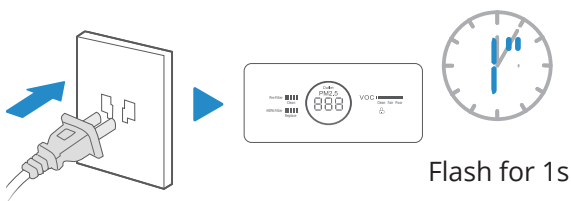
# | Trial operation

## ⚠ Notes

- This appliance is provided with a disassembly protection function; the appliance can only operate normally after the air inlet grill and air outlet grill are assembled properly.
- In case of continuous electricity, enter the working mode before the standby state, after each power on.
- The appliance is connected to the power again after unexpected power outage (when the power is off or the power cord is unplugged during normal operation), and then restores to the working state before the power outage.

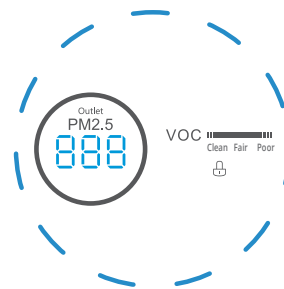
## 1 Preparations

Power on for the first time, the display panel flashes for 1s, and then the screen is turned off. The whole appliance is the standby state;



## 3 Pre-heating

The particle sensor enters the preheating state, and PM2.5 sensor digitally displays "----", and the then displays normally after 10s;



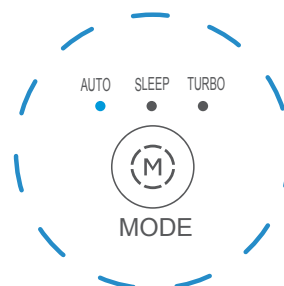
## 2 Switch

Press the ON/STAND-BY Button



## 4 Work

The purifier is powered on for the first time and then enters the AUTO mode.



# | Cleaning and Maintenance

## Body cleaning

### ⚠ Notes

- Be sure to turn it off before any maintenance, and cut off power.

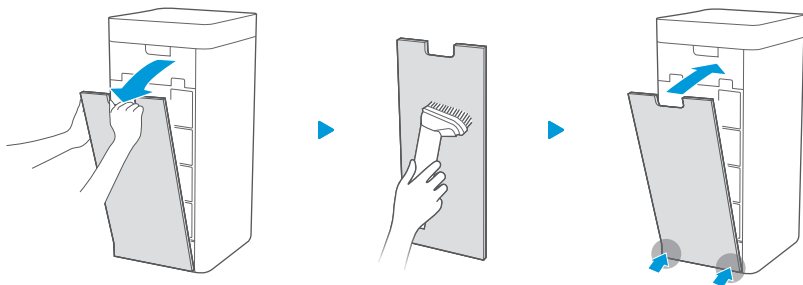
### Main machine

Wipe the body with a soft towel



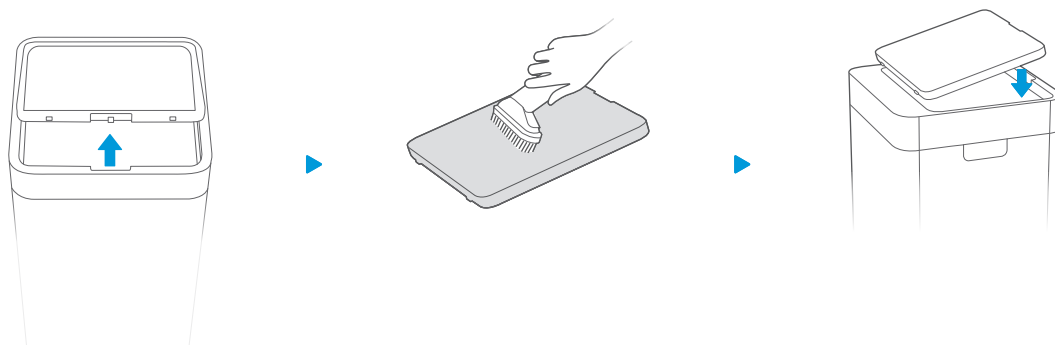
### Air inlet grill

Open the air inlet grill, vacuum up dust with a vacuum cleaner, and wipe it with a cloth



### Air outlet grill

Open the air outlet grill, vacuum up dust with a vacuum cleaner, and wipe it with a cloth



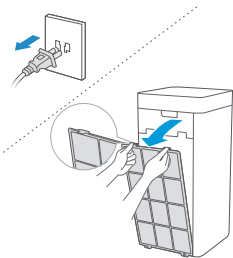


## Cleaning of the filter components

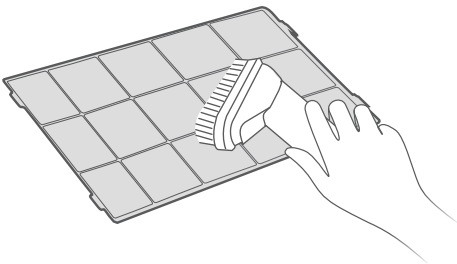
- 1 When the last bar of the progress bar turns red and the cleaning indicator light is on, it prompts that the Pre-Filter needs to be cleaned



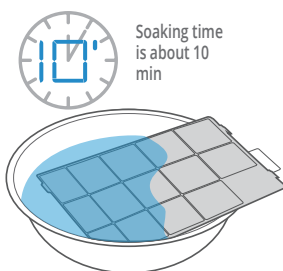
- 2 Unplug the power cord, and take out the Pre-Filter



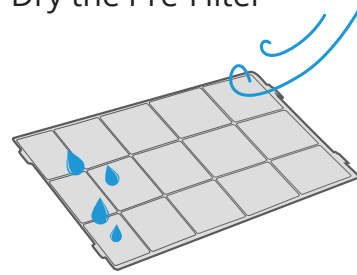
- 3 Vacuum up dust with a vacuum cleaner or wipe it with a cloth



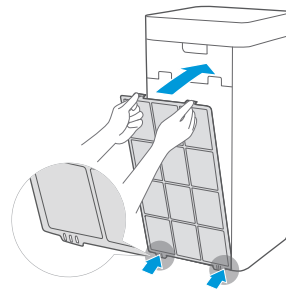
- 4 If there is a lot of dirt, the common diluted kitchen detergent is used to soak, and then clean it



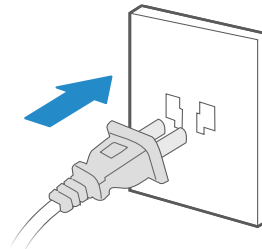
- 5 Dry the Pre-Filter



- 6 Assemble the Pre-Filter



- 7 Plug the power cord, and start up

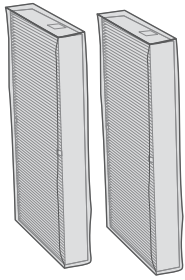


- 8 Long press the PM2.5 button for 3s, the cleaning indicator light is off, and the Pre-Filter is restored.

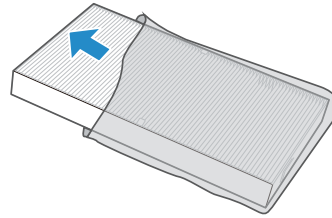


## Replacement of the filter components

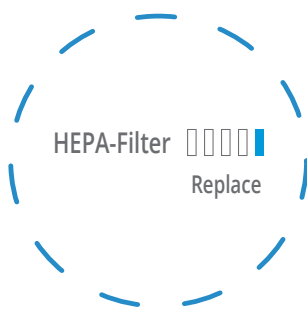
**1** Filter model: QLT-550-F (includes 2)



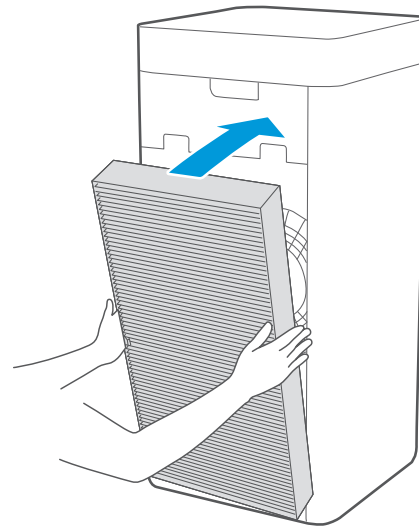
**4** Remove the protective film of the filter



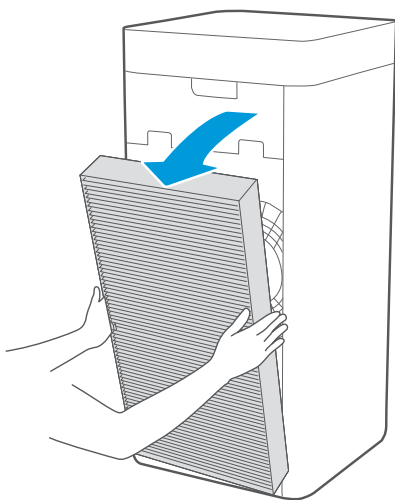
**2** When the last bar of the progress bar turns red and the Change indicator light is on, it prompts that the HEPA Filter needs to be replaced



**5** Assemble the HEPA Filter



**3** Take out the HEPA Filter



**6** Long press the PM2.5 button for 3s, the change indicator light is off, and the HEPA Filter is restored.



# | Service Guide

## Faults Handling

### ⚠ Notes

Please confirm the following contents before the entrusted maintenance

Faults	Troubleshooting
The display screen shows "Fd"	Software faults: Contact the after-sales office for treatment
The display screen shows "E3"	The fan speed is beyond control; Contact the after-sales office for treatment
The display screen shows "E0"	Master EEPROM hardware faults: Contact the after-sales office for treatment
The display screen shows "E1"	The disassembly protection is faulty, and the air inlet grill is not assembled properly: Assemble the air inlet grills and air outlet grills properly.
The display screen shows "Eb"	The communication between the button board and main control panel is faulty: Contact the after-sales office for treatment
The display screen shows "Eu"	PM2.5 sensor communication fault: Contact the after-sales office for treatment
The purifier is not working	Firstly, check whether the power cord is plugged into the power socket; the loose plug caused by the movement of the purifier may affect the energizing; Secondly, check whether the air inlet grill and air outlet grill of the purifier are assembled properly. This appliance is provided with a disassembly protection function. If the air inlet grill and air outlet grill are not assembled properly, the product cannot work.
The purifier has a small amount of air and is noisy	Firstly, check whether the foreign bodies block the air inlet grill and air outlet grill; if any, remove those foreign bodies; Then, check whether the Pre-Filter becomes dirty or reaches the end of its service life; if any, clean the Pre-Filter; Finally, check whether the HEPA filter is full of dust or reaches the end of its service life; if any, the replacement of the HEPA filter is required.
The air outlet smells odor	When the appliance is operated for the first time, it smells slightly plastic, which is normal; If this appliance works in places (like smoking area or rotisserie, etc.) with strong smell for a long time, you need to change the filter element frequently and reset it. Check whether the air inlet/outlet grill and Pre-Filter are full of dust or dirt; if any, maintain the appliance and clean the dust and dirt on the air inlet/outlet grill and Pre-Filter.
Whether the wheels are pulled out after inserted	Yes, tilt the machine at a small angle and pull them out with a little effort. If not, try to pull the wheels out while rotating them.
Whether the purifier can be used with the humidifier	The wet environment has a greater impact on the filter element, and the mist produced by the ultrasonic humidifier may cause abnormality in the PM2.5 detection of this appliance, so that simultaneous operation is avoided as much as possible.

## Product Parameters

Model	QLT-550
Voltage	220-240V
Rated power	38W
CADR (particulate matters)	550m <sup>3</sup> /h
Purification energy efficiency rating of the particulate matters	Efficient level
Noise	<56dB

- The various performance parameters in the table are measured in the factory and for reference only.
- If the appliance is modified, the parameters may be changed, and please be subject to the parameters on the nameplate.
- Purification principle: The fan of the air purifier draws air into the body for filtrating through the built-in filter element, which plays a main role in filtering the dust (like PM2.5, etc.), formaldehyde, odor, sterilization and so on.

## | Environment-friendly List

Name of components	Harmful substances					
	Plumbum (Pb)	Mercury (Hg)	Cadmium (Cd)	Hexavalent chromium (Cr(VI))	Polybrominated biphenyls (PBB)	Polybrominated Diphenyl Ethers (PBDE)
Shell components	○	○	○	○	○	○
Power cord components	×	○	○	○	○	○
Motor components	○	○	○	○	○	○
Appliance components	○	○	×	○	○	○
Wheel components	○	○	○	○	○	○
Circuit board components	×	○	×	○	○	○
Filter components	○	○	○	○	○	○

This table is formulated in line with the SJ/T 11364

"○" indicates that the contents of China RoHS controlled substances or elements in all homogeneous materials are below the limits as specified in GB/T26572;

"×" indicates that the contents of China RoHS controlled substances or elements in all homogeneous materials exceed the limits as specified in GB/T26572;

All the pictures in the manual are for explanatory purposes only. The actual shape of the unit you purchased may be slightly different, but the operations and functions are the same. The company may not be held responsible for any misprinted information. The design and the specifications of the product for reasons, such as product improvement, are subject to change without any prior notice.

Please consult with the manufacturer at +30 211 300 3300 or with the Sales agency for further details. Any future updates to the manual will be uploaded to the service website, and it is advised to always check for the latest version.



Scan here to download the latest version of this manual.  
[www.inventorappliances.com/manuals](http://www.inventorappliances.com/manuals)

# Activate your Warranty

Follow the next quick steps to activate your warranty:

## STEP 1

Visit our website via the link:

<https://www.inventorappliances.com/warranty-card>

or by scanning the QR code, as follows:



## STEP 2

Fill in the obligatory fields as requested in the "Owner's details" and "Unit's details":

To activate the warranty card, please fill in the following fields

Owner's details	Unit's details
Full Name	Unit
Address*	Serial Number of the unit*

## STEP 3

Click SEND button at the end of the submission form:

E-mail\*

Subscribe to our Newsletter

I agree to accept the terms and conditions.

once the warranty submission has been completed a confirmation message will be sent to your email

## STEP 4

Wait for the confirmation email you will receive at the email address you have filled in - please also check your spam folder.

## STEP 5

Inventor warranty is now valid!



# AIR PURIFIER



v 1.1

