

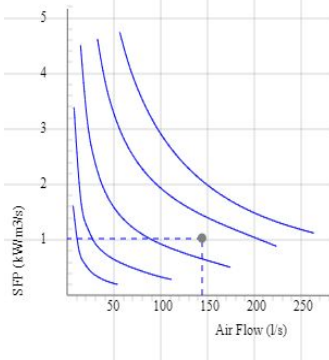
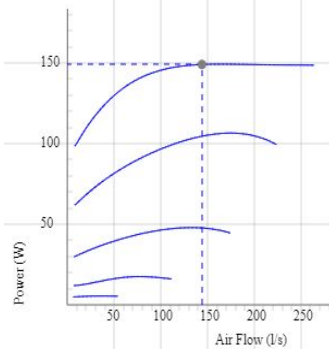
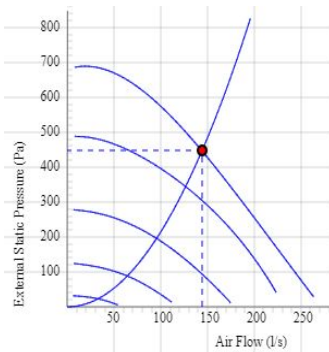


LPKB 200 C1 EC

- Low profile duct fan with circular connections.
- A small and useful duct fan which are perfect for spaces with minimum height clearance.
- With one connection on the inlet side.
- High capacity and efficiency with low sound levels.
- Impeller with backward curved blades.
- The external rotor motor has maintenance-free sealed ball-bearings and is very energy efficient.
- Speed controlling can be done with the built-in potentiometer, 0-10 V alt. external control.
- Integrated motor protection.
- Junction box has enclosure class IP 54.
- Fan housing is manufactured from galvanized sheet steel.
- Duct connections are equipped with rubber seals.
- The fan is intended to be installed in a duct system.
- A duct connected fan can be installed outside or in damp environments.
- The mounting brackets simplify installation in any position.

Accessories

- Speed controller MS EC
- Controller IQ-Reg EC
- Pressure regulator CALAIR-PR-230V
- Pressure regulator FKP-R
- MK 200
- BSV 200
- RSK 200
- YG 200
- VK 200
- FLK 200
- FLF 200
- LDC 200



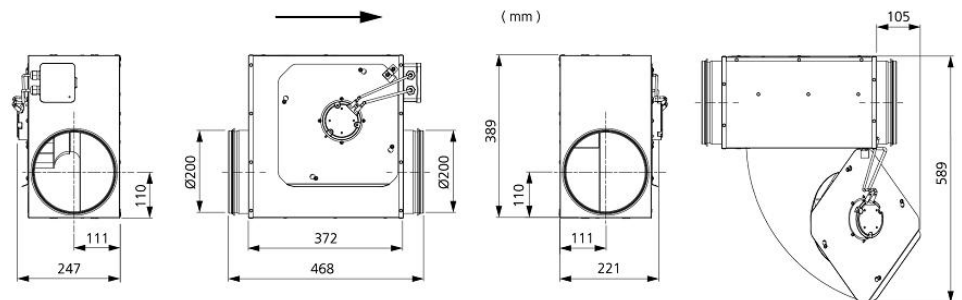
TECHNICAL DATA

7540814 LPKB 200 C1 EC-y2	
Voltage	230 V
Phase	1 ~
Frequency	50/60 Hz
Power	150 W
Current	1.19 A
Speed	2890 r.p.m.
Max. temperature of transported air	60 °C
Sound pressure level at 3 m	54 dB(A)
Weight	7.4 kg
Enclosure class	44 IP
Insulation class, motor	F
Duct connection	200 mm
Max. flow @ 0Pa	265 l/s
Max. pressure	668 Pa
Voltage range	200-277 V

SOUND DATA

	Flow (l/s)	L _{WA} tot dB (A)	63Hz	125Hz	250Hz	500Hz	1KHz	2KHz	4KHz	8KHz
5. Surrounding Lw dB(A) 10V	169	61	37	44	54	58	51	51	43	35
5. Outlet Lw dB(A) 10V	169	81	63	68	74	77	71	73	67	60
5. Inlet Lw dB(A) 10V	169	76	59	65	70	72	65	66	61	54
4. Inlet Lw dB(A) 8V	149	73	57	62	68	68	62	63	57	49
3. Inlet Lw dB(A) 6V	113	67	51	57	64	61	55	55	49	38
2. Inlet Lw dB(A) 4V	72	56	42	50	51	52	45	42	33	20
1. Inlet Lw dB(A) 2V	37	40	32	35	34	33	23	13	8	5

DIMENSIONS



Voltage steps

1	2	3	4	5
2V	4V	6V	8V	10V